

動力刀塔

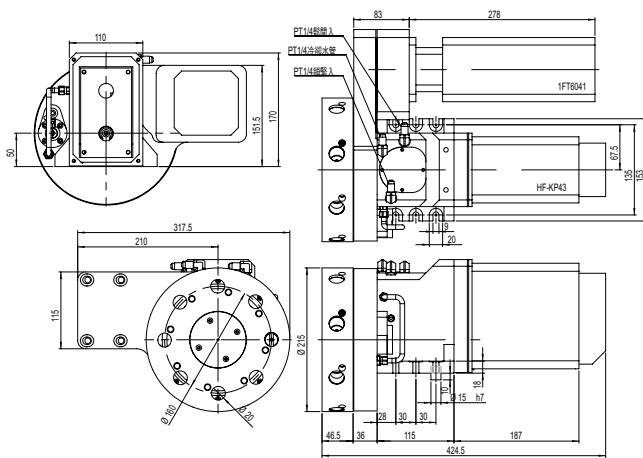


特性 / Features

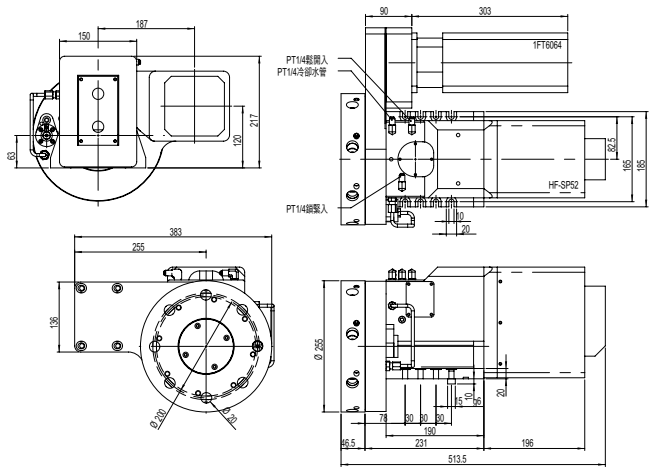
- 動力刀具最高轉速可達R. P. M. 5000/6000，扭力超強，適用重銑切削、鑽孔、攻牙。
 - 動力刀座的聯結器採用DIN 1809介面。
 - 旋轉定位採用三片式離合齒及油壓鎖緊，耐用性高，適合重切削。
 - 動作快速，轉一刀位只需0.1秒(相鄰刀)，定位精度±2秒，重覆精度±1秒。
 - 動力主軸馬達可依不同控制器型號作改變，如西門子、三菱。
 - 刀盤型式採用VDI定點精度可達0.01mm(未裝刀座)，同心度達0.005mm。
 - 旋轉定位與動力刀具交換時間在1秒內。
 - 低噪音、耐用性佳。
- Maximum speed of the power tooling can be reached 5,000/6,000 rpm with strong clamping force which is suitable for heavy cutting such as milling, drilling and tapping machining.
 - Adopting interface coupling of power tool holder with DIN 1809 type.
 - Adopting 3 pcs Hirth Coupling & Hydraulic Clamping /Unclamping System suitable for heavy cutting long term operation.
 - There is need 0.1 sec. only with speedy rotation time(adjacent), Indexing accuracy:±2 sec. Accuracy of repeatability:±1 sec.
 - Spindle Motor can be changed according to different controller model such as SIEMENS and MITSUBISHI.
 - Adopting tool disc model of VDI type, position accuracy can be reached 0.01mm (without tool holder), concentricity can be reached 0.005mm.
 - Changing time between in rotating position and power tooling within one second.
 - Low noise and high durability.

外觀尺寸圖 / Dimension

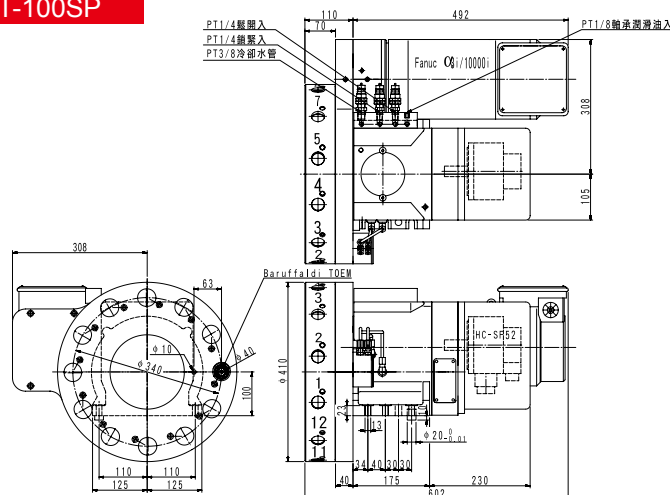
CLT-50SP



CLT-63SAP



CLT-100SP



Power Tooling Turret

規格表 / Specification

項目	Item	單位/ Unit	CLT-50SP	CLT-63SAP	CLT-100SP	
刀數	Allowed number of tools	N	8	8	8	12
中心高	Center height	mm	50	63	100	
轉動慣量	Inertia of movement for tool-disc	kg.m ²	0.35	0.5	3.0	5.0
旋轉一刀位時間	Rotation time (adjacent)	sec.	0.13	0.12	0.18	0.12
旋轉及鎖緊	Rotation and clamping	sec.	0.28	0.32	0.48	0.42
鎖緊力	Clamping force	kg	500	1225	3600	
180度分割時間	Total indexing time for 180°	sec.	0.52	0.48	0.72	
轉180度所需時間 (含鎖緊)	Total indexing time for 180° (include clamping)	sec.	0.66	0.78	1.02	
油壓壓力	Hydraulic working pressure	kgf/cm ²	25~30	25~30	33~37	
油壓流量	Hydraulic flow rate	L/min	12	12	30	
分割精度	Indexing accuracy	sec.	±2"	±2"	±2"	
重複精度	Accuracy of repeatability	sec.	±1"	±1"	±1"	
淨重 (含刀盤)	Net weight (with tool disc)	kgs	75	125	270	

旋轉本體部分 / Rotating

伺服馬達型號	Servo motor model (rotating)		HF-KP43 (MITSUBISHI) 0.4KW	HF-SP52 (MITSUBISHI) 0.5KW	HC-SF52 (MITSUBISHI) 0.5KW
齒數比	Gear ratio for rotating		30:1	36:1	45:1
最大扭力	Max torque for rotating	N/m	3.8	7.16	108
離合齒外徑/型態	Diameter of coupling type	mm	Ø80 / 3pcs	Ø110 / 3pcs	Ø170 / 3pcs
刀盤淨重	Weight of tool disc	kgs	14	14	116

動力馬達 / Power Tooling

主軸馬達型號 (標準)	Spindle motor model (tooling)		1FT6041(SIEMENS) 1.07KW	1FT6044(SIEMENS) 2.2KW	α3/10000i (FANUC) 5.5KW
刀具尺寸	Tool holder shaft size	mm	Ø20 (VDI-20)	Ø20 (VDI-20)	Ø40 (VDI-40)
驅動離合齒	Rotating tool holder coupling		DIN 1809	DIN 1809	Baruffaldi TOEM
齒數比	Gear ratio for power tooling		1:1	1:1	1.315:1
最大扭力	Max torque for power tooling	N/m	10	14	30
最高時速(R.P.M.)	Max speed at the power tooling	RPM	6000	6000	5000

- ◆ 以上所列規範旭陽公司保留規格修改權力，客戶可提出需求規格另定規格協議。
- ◆ GSA remains the right of modification. All specifications can be modified according to customers' requirement.